



Ultraview SL2600

# Spacelabs Healthcare - Connecting Innovation with Care

Spacelabs Healthcare is fully committed to making strong connections: between clinicians and their patients; between technological innovations and real-life patient care; between clinical needs and cost-efficient solutions. We are a dynamic company with decades of experience providing innovative products and services to healthcare professionals.

**Our goals are simple:**

**Keep it easy to use, focus on system flexibility and scalability, and provide access to information anytime, anywhere. The result will continue to fulfill your greatest need: more time to care for your patients.**



# Advanced Compact Monitoring

With its compact design, large display and comprehensive monitoring capabilities, the Ultraview SL™2600 is the perfect choice for monitoring in the operating room, the emergency department or the critical care area. Its compact size, wireless network capability and integrated handle make it well-suited for patient transport. Fast setup and easy operation allow clinicians to focus on the patient, not the equipment. Spacelabs WinDNA® functionality brings information to the point of care, and with our Data Shuttle® capability, you can maintain a concise and complete electronic patient record from admission to discharge.

**Integrated 12.1" high-resolution touchscreen display; standard features include an integrated alarm light, remote keypad support and interactive networking. Basic configuration provides four waveforms and support for twelve parameters. WinDNA and wireless networking are optional.**

---

## Advantages



### **Consistency and flexibility for superior ease of use and optimal performance in any care environment.**

- Intuitive touchscreen menu structure across all Spacelabs products
- Default alarm limits and customizable parameter settings
- Modular, scalable architecture
- Compatible with Ultraview®, Ultraview SL and PCMS™ monitors and modules
- Easily upgraded and/or maintained in the field

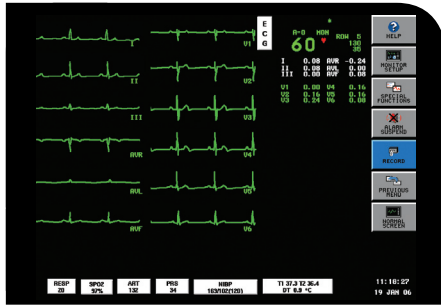
### **Integrated alarm management solutions streamline event notifications and documentation.**

- Alarm Limit Review provides a printable summary of alarm limits for all active parameters
- Flexport® system interfaces link alarms from standalone devices
- Tone Access controls
- Alarm Watch delivers bed-to-bed and bed-to-central alarm notification



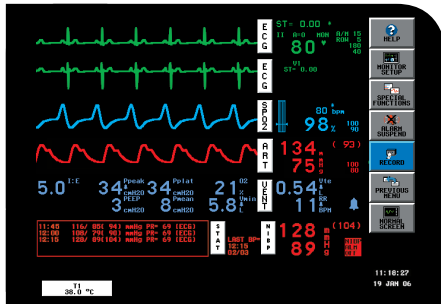


# Ultraview SL2600



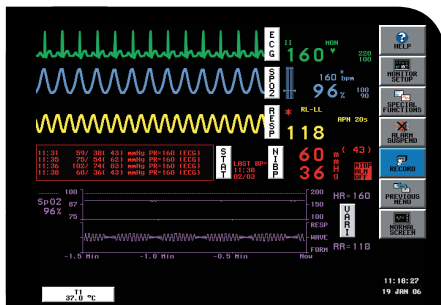
## Advanced cardiac monitoring without additional equipment

- Continuous 12-lead ST segment monitoring
- Dual-lead arrhythmia analysis and trending
- Diagnostic-quality, 12-lead ECG reports with optional interpretation package



## Flexport system interfaces extend the reach of patient care to standalone devices

- Consolidate waveforms, data and alarms at the bedside and central
- Integrate information directly into the monitor trends for output to HIS and CIS applications
- Provide view, control, review and recording of patient information across the network



## Varitrend® 3 OCRG for neonatal event review

- Combines HR, SpO<sub>2</sub> and respiration trends into a single graph
- User-definable events for quick assessment of clinical changes

A variety of mounting solutions provided by GCX Corporation makes it easy to use the Ultraview SL2600 in different care areas.










Convenient battery compartment holds two batteries that will provide up to 2.5 hours of operation each.

External quick charger means you are always ready for transport.



## Parameter Module Solutions

Ultraview SL Command Module							
Parameter Set	ECG	NIBP	TEMP	IP	CO	SpO <sub>2</sub>	
 <b>91496-A</b> Noninvasive Set	✓	✓	2	–	–	Comprehensive SpO <sub>2</sub> Options	
 <b>91496-B</b> Invasive Set	✓	✓	2	2	–		
 <b>91496-C</b> Invasive Set with CO	✓	✓	2	4	✓		
 <b>91496-I</b> Noninvasive Set without ECG	–	✓	2	–	–		

### Options – SL Command Module:

- Three levels of arrhythmia:
  - Basic
  - Standard Multiview™ (MVI)
  - Advanced Multiview™ (MVII)
- Diagnostic 12-lead ECG
  - With measurement & interpretation
  - Without measurement & interpretation
- ST segment analysis
- MasimoSET, Spacelabs or Nellcor OxiMax SpO<sub>2</sub>
- Respiration
- Varitrend® 3 OCRG

### Specialty Modules:

- 90482 EEG
- 90478 TM Receiver
- 91482 BISx™
- 91518 Multigas Analyzer
- 91517 Capnograph

### Network

The Spacelabs monitoring network supports seamless data acquisition and exchange across the enterprise, addressing the clinician's need for continuous information management.

### Supplies and Accessories

High-quality supplies and accessories are important for monitoring system performance and for economical and efficient patient care. All Spacelabs supplies and accessories are carefully designed and tested to guarantee optimal system performance.

Available accessories include:

- Flexport interfaces to standalone devices
- Remote keypad
- External nurse alarm light
- Battery charger
- GCX mounting and mobility solutions
- Integrated Module Housing

### Options

- Perioperative Software
- 6 waveforms with support for up to 18 parameters
- WinDNA
- Full Bed Review (FBR)
- Full View ECG Display
- Data Shuttle
- Drug Dose Calculations
- Vital Sign Calculations
- Patient Data Logger™ (PDL)
- Wireless networking\* (802.11b compliant)
- 2-channel recorder