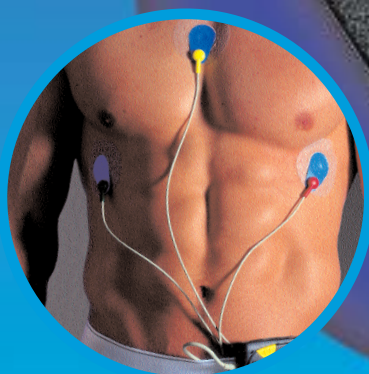
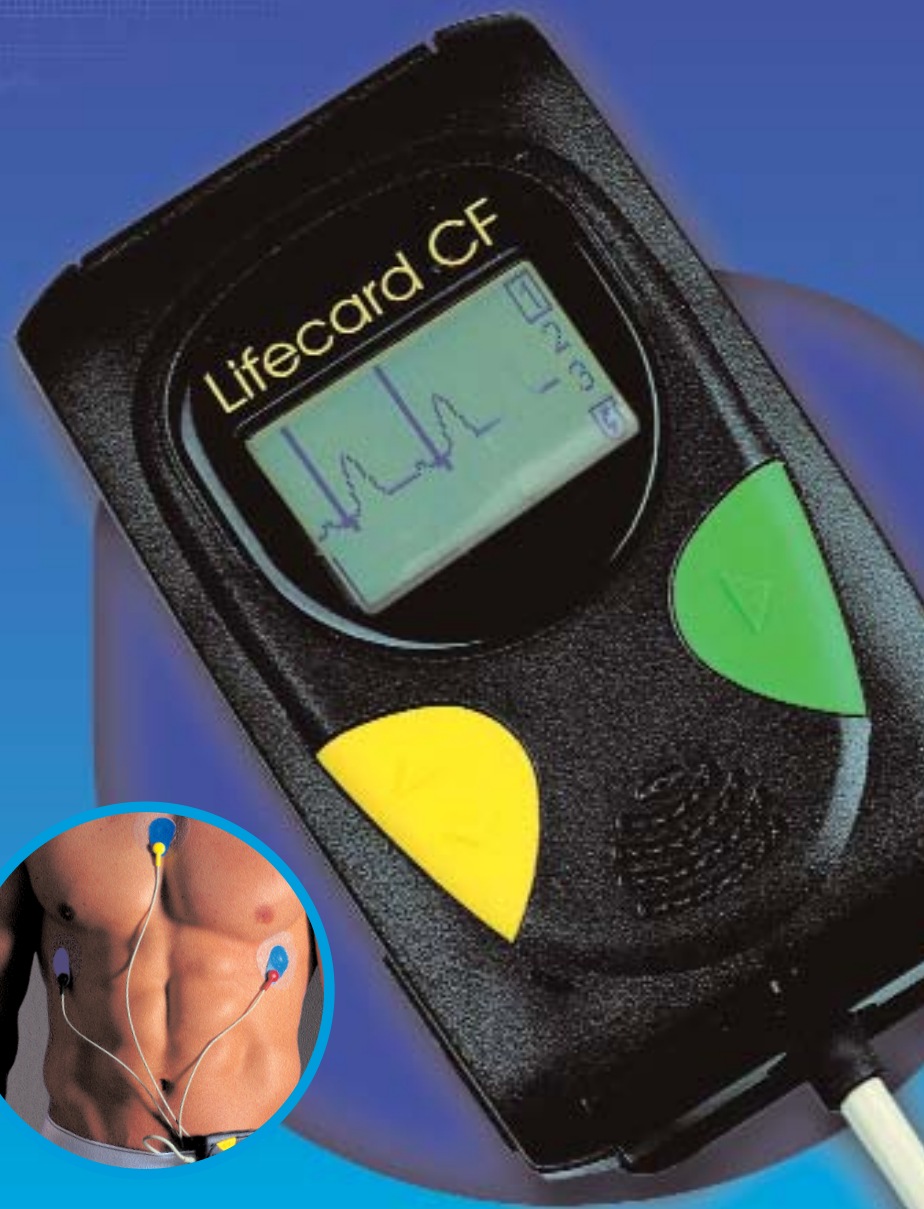




Lifecard CF[®]

DIGITAL HOLTER RECORDER



Actual Size

- Only 3 electrodes for 3 channels of ECG
- ECG display during hook-up
- 7-day continuous ECG recording
- 12-bit resolution for Crystal clear ECG



only 3 electrodes for
3 channels of ECG



ECG is displayed
during every hook-up

Lifecard CF - for the clearest digital ECG

Lifecard CF takes digital Holter recording to a higher level. 12-bit resolution and Ultrasharp™ technology deliver outstanding ECG quality for accurate analysis from the most challenging recording environments.

On-board ECG Display

Lifecard CF has a built in ECG display that allows you to monitor the ECG during hook-up. It even tells you when it has detected each atrial and ventricular pacing spike so you can optimise lead placement.

Pacemaker Spike Detection

Lifecard CF has an extremely sensitive pacemaker detection circuit with excellent noise rejection that operates continuously, with performance **better than 10,000 Hz** sampled pacemaker detection methods.

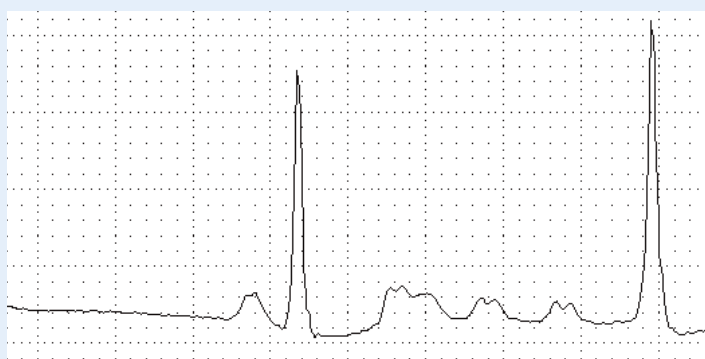
The ultra low power design allows it to run from **one AAA** battery to acquire **7 days** of continuous ECG.



Just the length of a credit card
and only 118g

The high resolution digital recorder

Lifecard CF uses 12-bit technology to bring you Ultrasharp™ ECGs. Even the most subtle atrial arrhythmias and atrial pacing phenomena can be clearly seen in 12-bit ECGs. P-waves are rounded, not squared off, and details like notched P-waves are precisely reproduced. 12-bit ECG can make the difference between confident diagnosis and an inconclusive Holter test. Some of the arrhythmias that show up clearly in 12-bit ECG could be missed altogether without it.



Notches in supraventricular activity
clearly visible in Ultrasharp™ 12-bit ECG

7-day continuous ECG capability

Diagnose arrhythmias before they become an everyday occurrence.

Lifecard CF can record up to 7 days of continuous ECG which can be quickly scanned using Lifescreen software to find the most appropriate day for Holter analysis. That 24-hour period can then be analysed using any of our current Holter scanners.

7-day recording enables positive early diagnosis of patients before their arrhythmias become an everyday occurrence.





voice recording stores patient name and ID



splashproof for added practicality

Comfortable patients - better recordings

Lifecard CF's patented **3-channel 3-electrode** hook-up improves patient comfort, which is very important for 7-day recordings. The **splashproof** design and disposable carrying pouch (see picture opposite) make it practical and convenient to wear the device under the clothing with short cables. This minimizes electrode disturbance and improves ECG quality, and it gives the patient the freedom to change clothes and perform their daily routine.

Never lose a recording again

Lifecard CF is designed to prevent tampering by the patient. Even if the battery or CF card is accidentally removed, when replaced the recording continues as normal, leaving a gap in the ECG and not a flat line.

A back-up rechargeable battery maintains the clock and user settings for over three months when the recorder is not being used.



inserting a CF card into the Holter analyser's card reader for immediate analysis

The latest technology in a rugged, splashproof enclosure

Lifecard CF benefits from all the latest improvements in CompactFlash memory technology. Removable cards allow future memory upgrades for today's devices. Using multiple cards allows quick transition to the next patient, and ECGs recorded on cards can easily be sent to a remote location for analysis.

Rugged

Lifecard CF is tested to withstand a **3 foot drop** onto concrete and still function perfectly.

Splashproof

A new Lifecard CF is rated to IPX7 (immersion in water) when the seals are new, so you can be confident that it will be splashproof for years to come.

Voice recording: No PC necessary at hook-up

If no PC is available during hook-up, a voice recording of the patient's name and ID can be stored on the card, so hook-ups can be done anywhere. With multiple cards, there is no need to access a PC before re-using the recorder – just insert a fresh card and make a voice recording.

Data Management & Networking

Lifecard CF recordings integrate with the Del Mar Reynolds Cardiology Information Management System. CardioNavigator® (C-NAV) provides one central platform and core database for all ECG data and links to the Hospital Information Management System (HIS).

Upload patient details directly from the HIS via C-NAV into the Lifecard CF to save time and reduce transcription errors. Completed recordings can then be downloaded to any terminal on the C-NAV network for analysis on any networked system.

All Holter data, including raw ECG and reports, are stored in the same central location as these other C-NAV integrated procedures:

- Resting ECG
- Stress Testing
- ECG Event Recording
- Ambulatory BP





Additional Features

Pacemaker Spike Detection
Single AAA alkaline cell required
Splashproof
 Patient ID storage (**voice recording**)
Lightweight and comfortable to wear
 Time and Date Recording

Patient event button
 Large Digit LCD Clock Display
On board ECG hook up monitor
 Belt Clip standard on long length patient cables
7-Day Capability with Lifescreen screening system for increased diagnostic yield

Specifications

Dimensions 96 x 57 x 18 mm
 (3.8 x 2.2 x 0.7 inches)
Weight* 118 g (4.2 oz)
Power Supply One AAA alkaline or rechargeable battery (NiMH)
Memory 90 MB removable CF card
Procedure Options 3 or 6 electrode 3 channel 48 hr,
 4 electrode 2 channel 48 hr,
 2 electrode 1 channel 7-day
 OR
 3 or 4 electrode 2 channel 7-day
Data Compression None in 48 hour recording.
 In 7 day mode:
 10 mV max. error compressing
 MIT-BIH databases. Exceeds EC38
 requirements.
 3 channel 7-day uncompressed
 recording (384 MB) is available to
 special order.

Dynamic Range 10 mV
Amplitude Resolution 2.5 microvolt (0.0025 mV)
Sampling Rate 1024 samples per second
Frequency Response 0.05 Hz to 40 Hz
Pacemaker Pulse Detection Channels 1 and 2
Pacemaker Pulse Sensitivity 7 mV
Calibration Automatic
Signal to Noise Ratio 70 dB
Common Mode Rejection >80dB at 50/60 Hz
Input Impedance >5 Mohm
Temperature Operating: 0° to +45° C
 Storage: -20° to +65° C

*weight includes battery, patient cable and Compact Flash Card

www.delmarReynolds.com



Del Mar Reynolds Medical Ltd.
 1 Harford Court, John Tate Road,
 Hertford, SG13 7NW, United Kingdom.
 Tel: +44 (0)1992 507700
 Fax: +44 (0)1992 501213
 Email: europe@dmr.ferrarigroup.com

Del Mar Reynolds Medical, Inc
 13 Whatney, Irvine
 CA 92618-2837, USA
 Tel: +1 (800) 423-0480
 Fax: +1 (949) 699-3380
 Email: usa@dmr.ferrarigroup.com

Distributed by:



Holter Monitoring